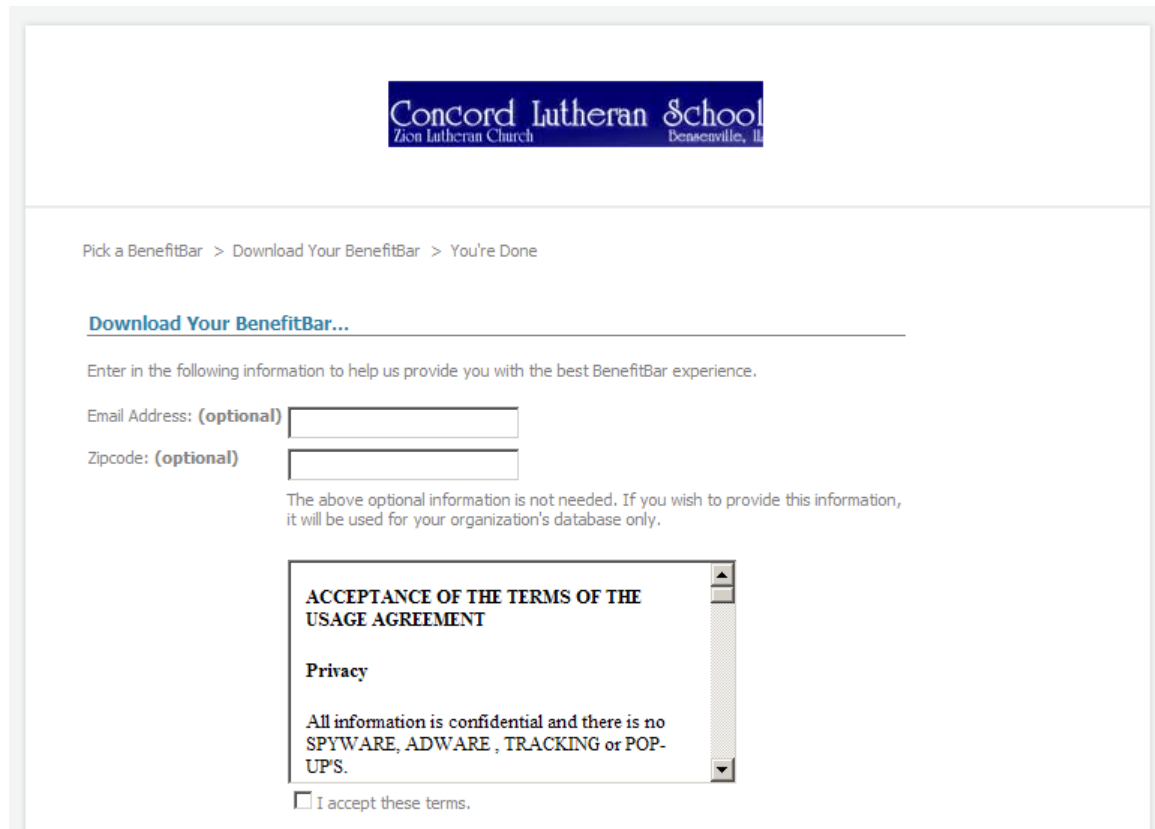


## How to setup Concord's Benefit Bar For Internet Explorer

---

1.) Open your web browser and navigate to

<http://www.concordlutherschool.com/benefitbar>




The screenshot shows the Concord Lutheran School website's Benefit Bar setup page. At the top is the school's logo, which includes the text "Concord Lutheran School" and "Zion Lutheran Church Bensenville, IL". Below the logo is a breadcrumb trail: "Pick a BenefitBar > Download Your BenefitBar > You're Done". The main heading is "Download Your BenefitBar...". A sub-heading asks the user to "Enter in the following information to help us provide you with the best BenefitBar experience." There are two input fields: "Email Address: (optional)" and "Zipcode: (optional)". Below these fields is a note: "The above optional information is not needed. If you wish to provide this information, it will be used for your organization's database only." A scrollable window displays the "ACCEPTANCE OF THE TERMS OF THE USAGE AGREEMENT" and "Privacy" section, which states: "All information is confidential and there is no SPYWARE, ADWARE, TRACKING or POP-UPS." At the bottom of this window is a checkbox labeled "I accept these terms."

- 2.) If you wish, enter in your e-mail address and zip code. This step is optional.
- 3.) Read through the Terms of Use statement and click the "I accept these terms" checkbox.
- 4.) Scroll to the bottom of the window.

**Privacy**

All information is confidential and there is no SPYWARE, ADWARE, TRACKING or POP-UPS.


I accept these terms.




**Internet Explorer**

Our BenefitBars for Internet Explorer require the following system requirements to run properly:

- Windows Vista
- Windows XP
- Windows 2000
- Internet Explorer Version 6.0 or later
- High-speed Internet Connection


 [Download Now!](#)



**Mozilla Firefox**

Our BenefitBars for Firefox require the following system requirements to run properly:

- Windows Vista
- Windows XP
- Windows 2000
- Mac OSX
- Linux
- Mozilla Firefox 2.0 or later
- High-speed Internet Connection

 [Download Now!](#)


Copyright 2006 © BenefitBar.com.  
All rights reserved.  
Patent Pending.

[Home](#) | [Contact](#) | [Help](#) | [Terms of Use](#) | [Privacy](#)

5.) Click on the left "Download Now!" button.

6.) At the next page, you may be prompted to download a file. If not, click on "Click Here".

This will initiate the download.



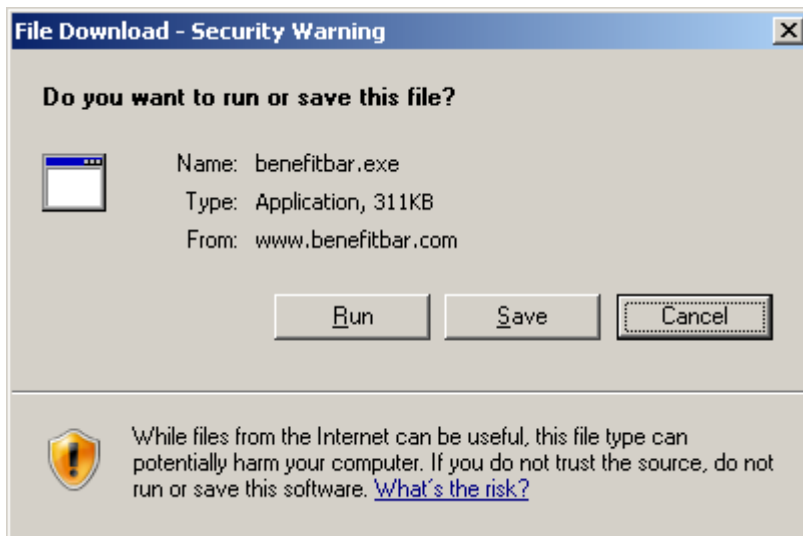
Pick a BenefitBar > Download Your BenefitBar > You're Done

**[Click Here...](#)**  
to download the BenefitBar if your download does not start within 10 seconds.

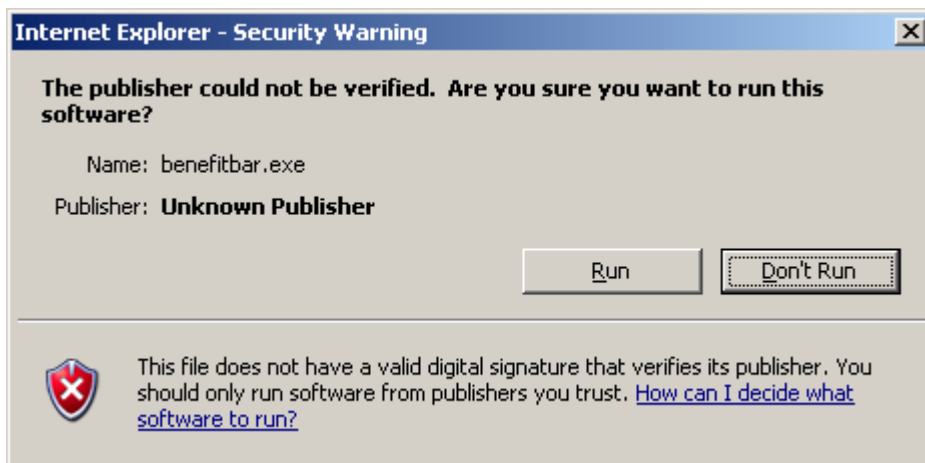
**To complete the download:**

1. Click on Run-RUN\_INSTALL\_FINISH then after you click on FINISH you will see this page appear again. Then continue with number TWO on this list.
2. Close all Internet browsers that are open on your computer
3. Open up a new Internet browser (Internet Explorer)
4. Select the menu 'View' and then 'Toolbar' and click on your BenefitBar
5. Enjoy your BenefitBar

7.) Click Run.



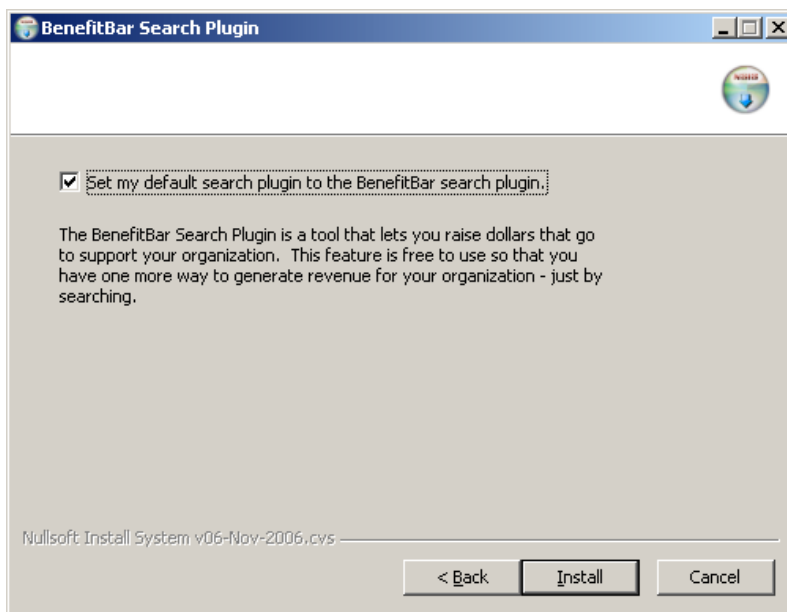
8.) Depending on the version of Internet Explorer, you may be prompted again. If not, continue to step 9.



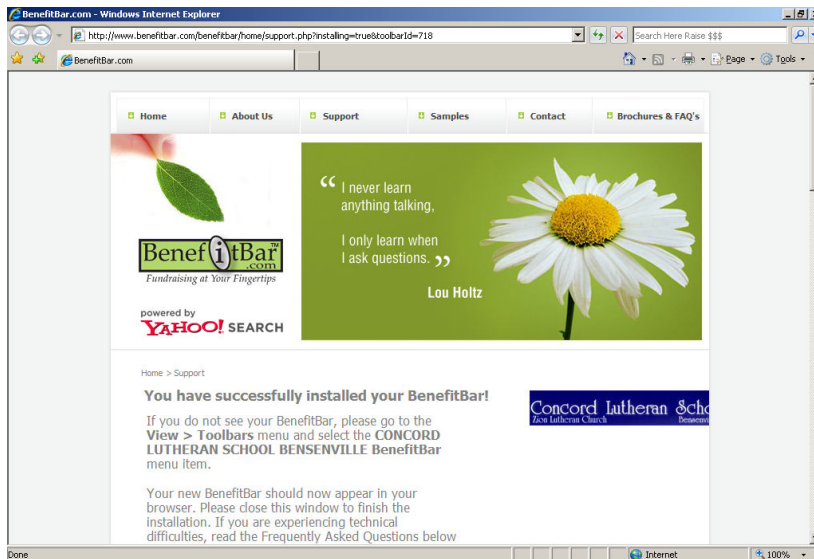
9.) Click Next



10.) Depending on the version of Internet Explorer, you may be prompted to set your default search plug-in. Click Install.



- 11.) Once the installation is complete, it will open the Benefit Bar web page that states that you have successfully installed the plug-in.



- 12.) Close all browser windows.

- 13.) Open a new web browser window

- 14.) Click View > Toolbars > CONCORD LUTHERAN SCHOOL BENSENVILLE Benefit Bar

